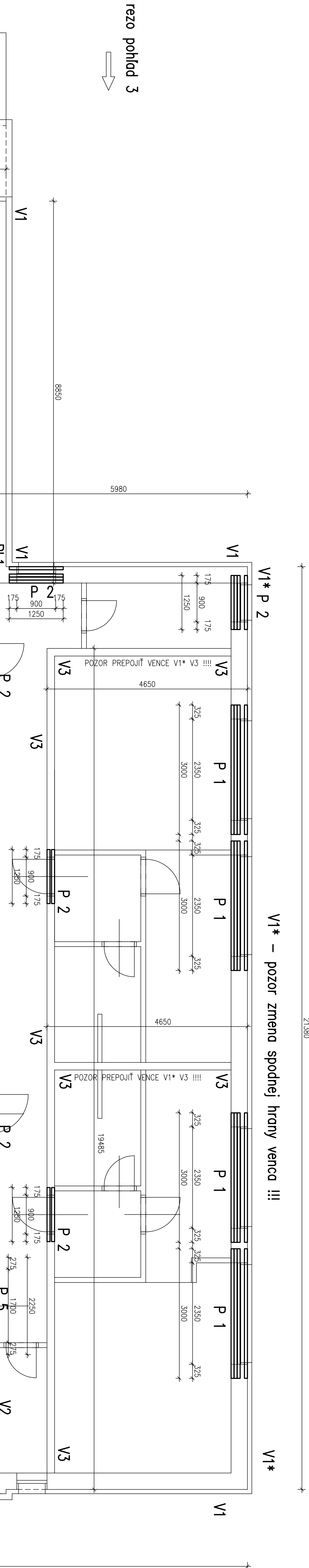
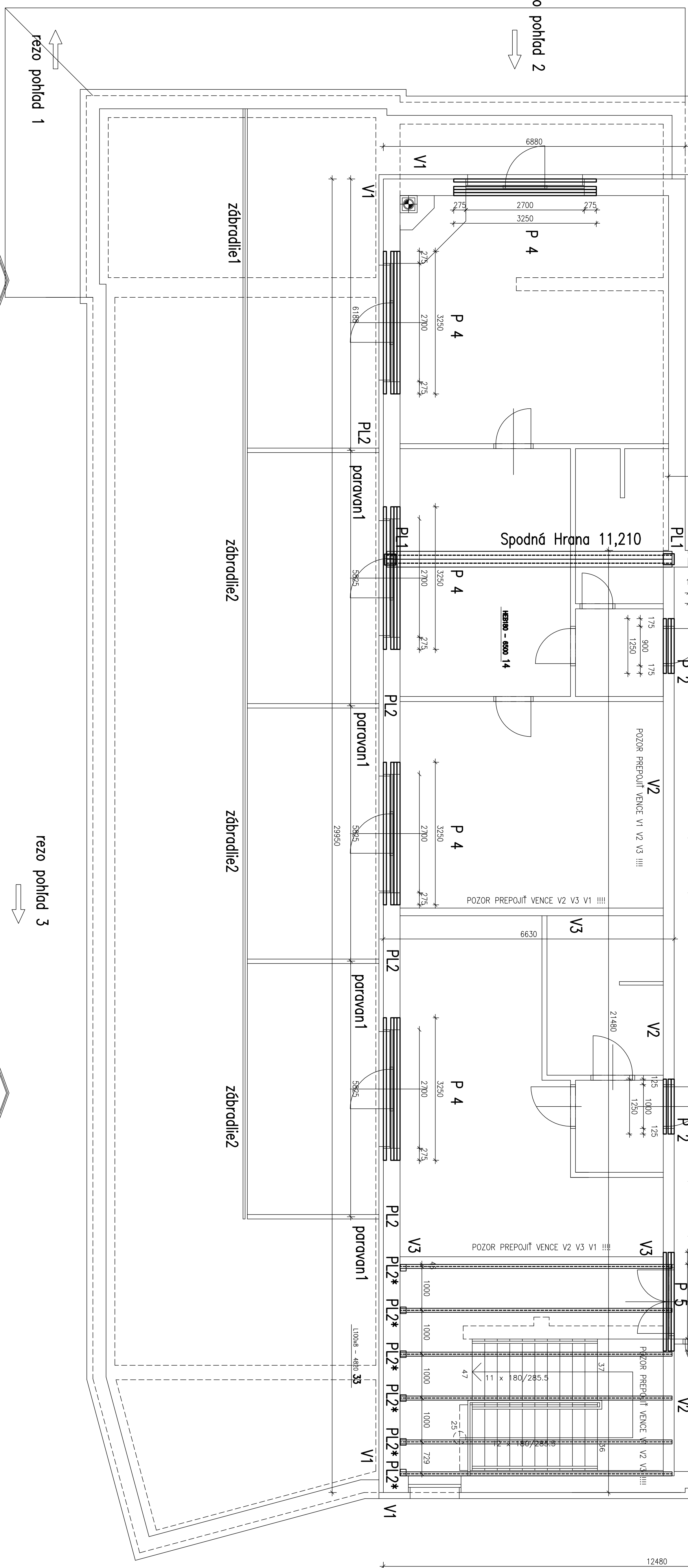


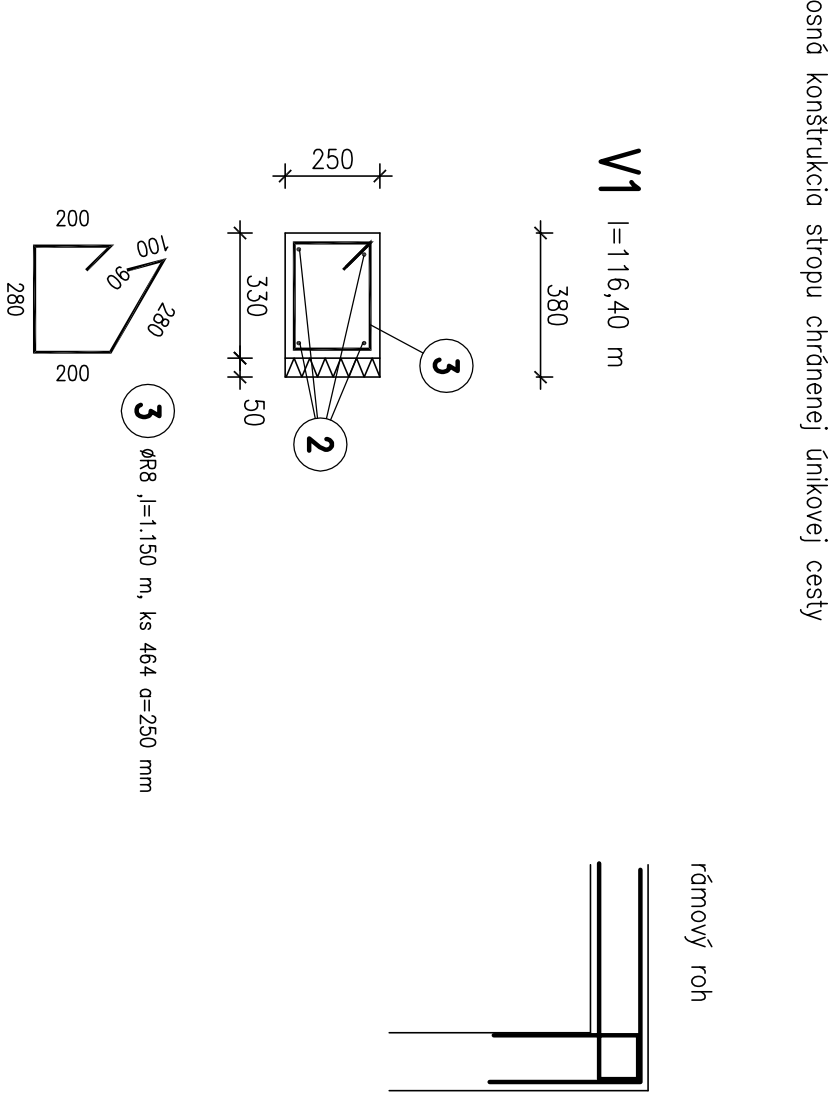
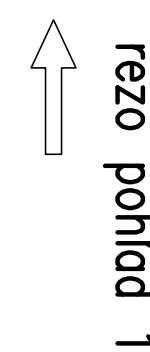
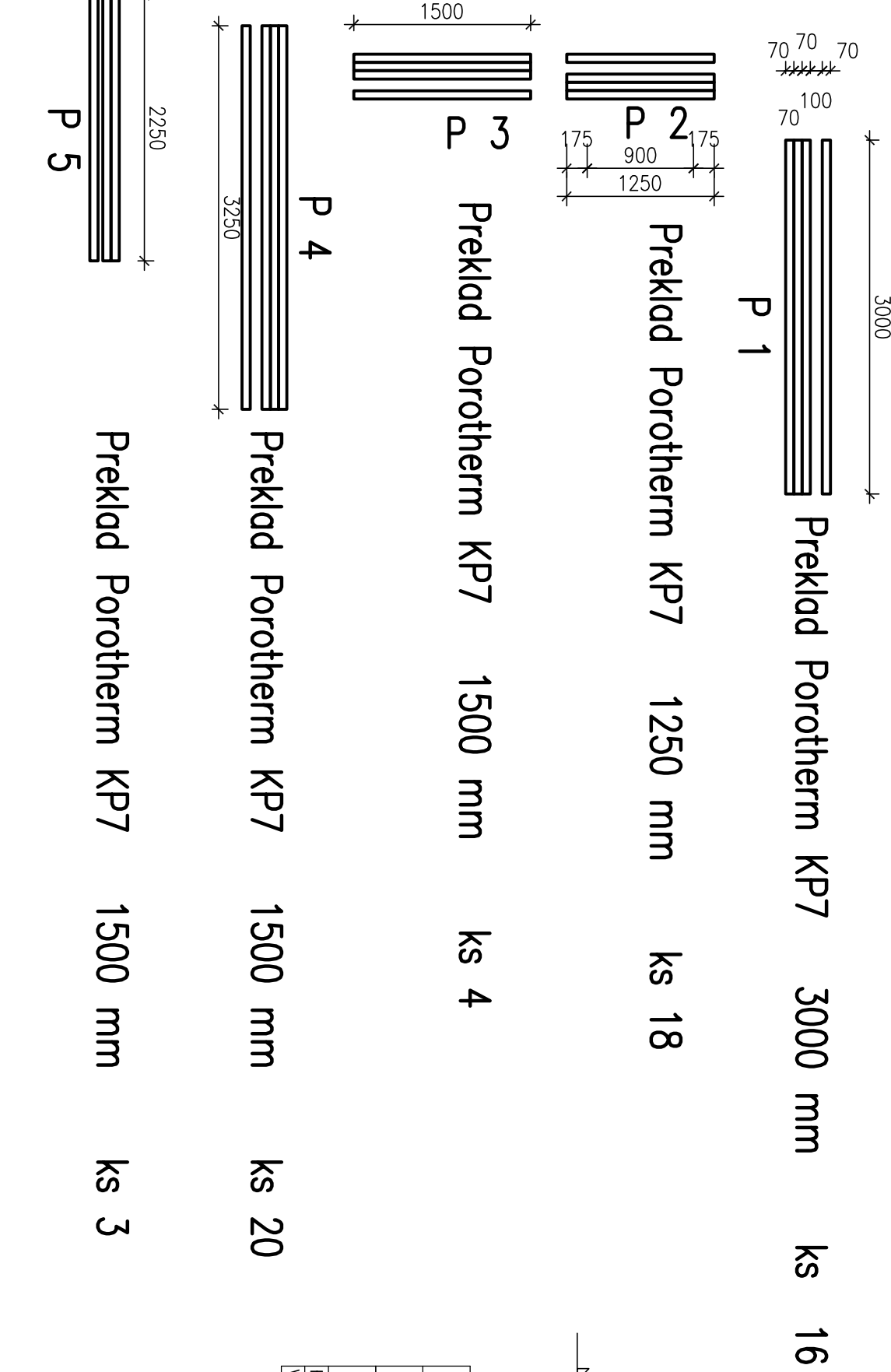
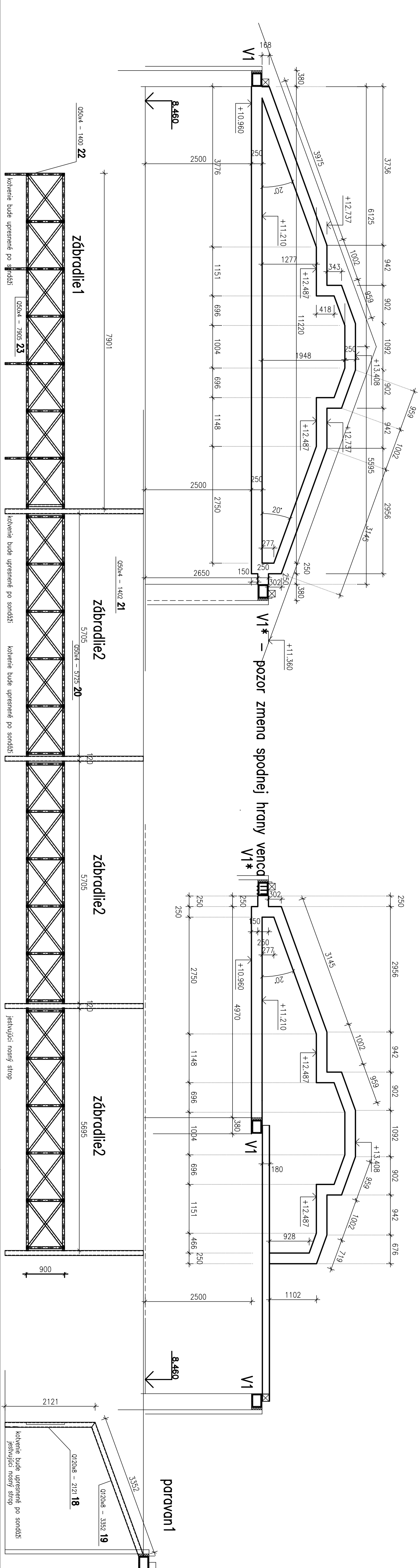
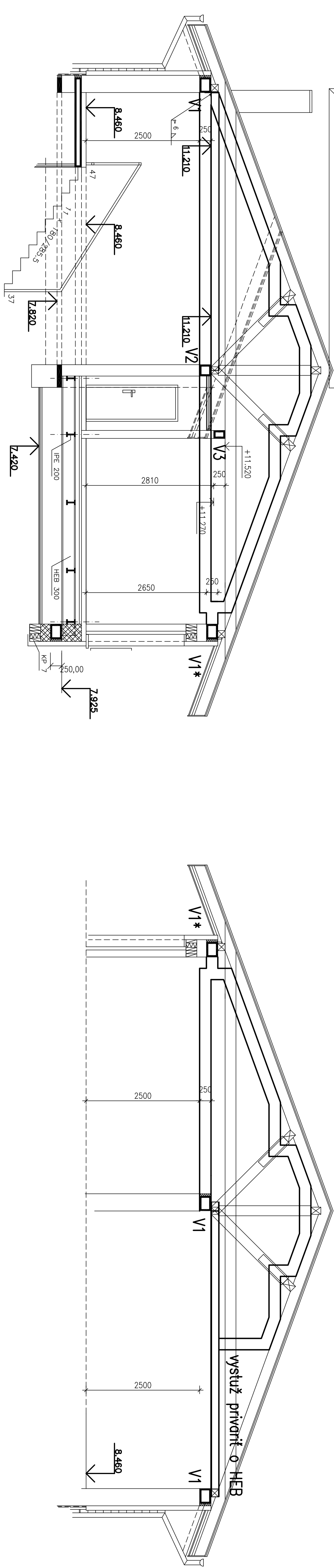
V1* – pozor zmena spodnej hrany vena ili...



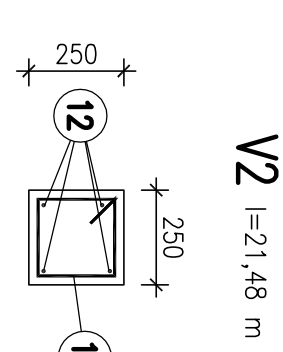
rezo pohľad 2



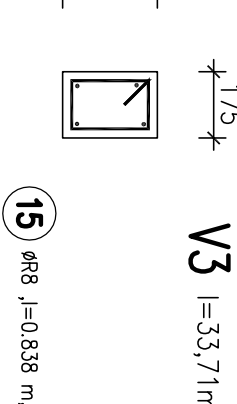
rezo pohľad 3



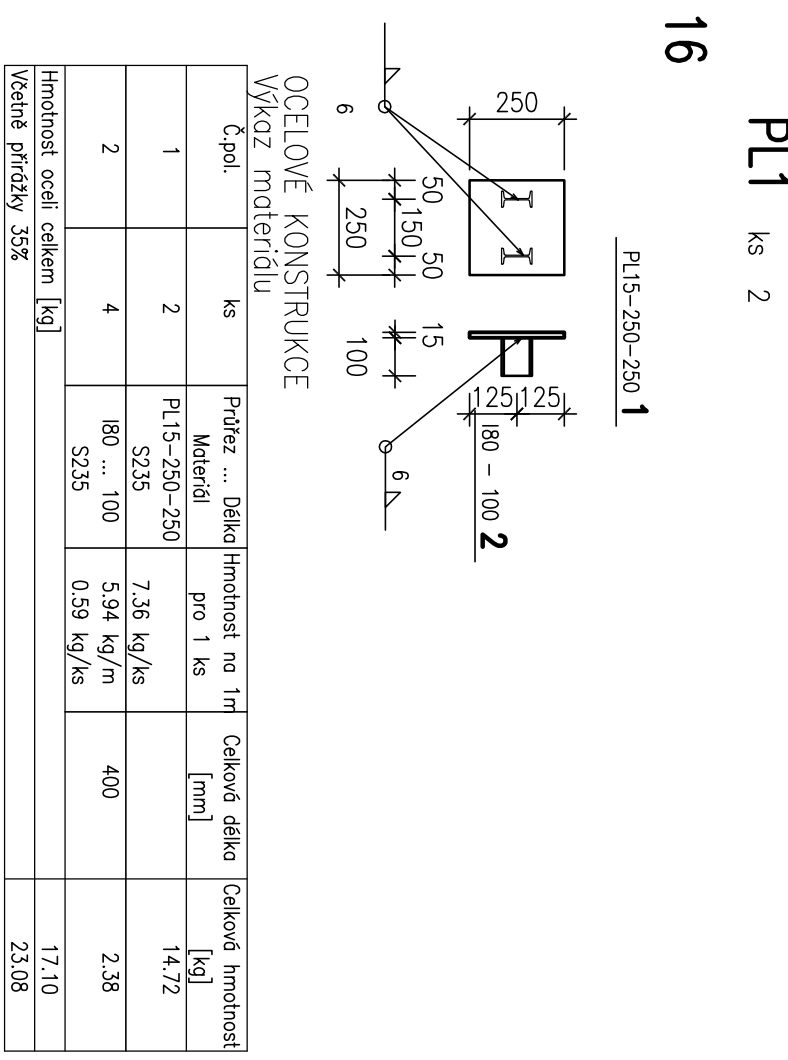
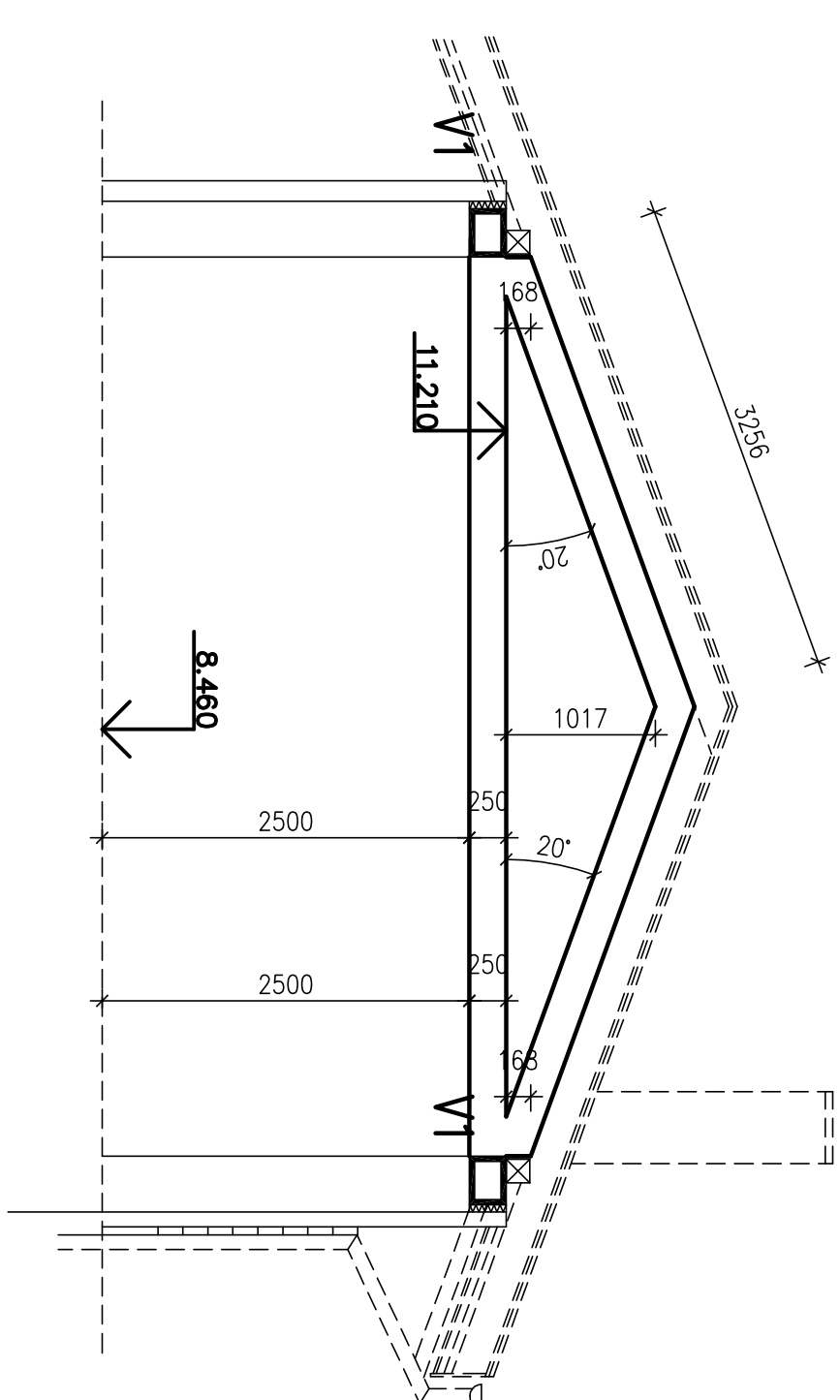
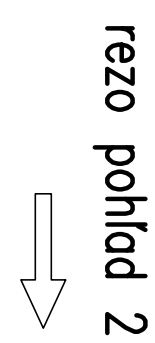
VÝRAŽOVÉ				
Č.p.	φ	Delka	Počet	Delka (m)
1	[mm]	[m]		10005
2	R12	160,00	4	R12
3	R8	1,15	464	R8
Obecná délka [m]				533,600
Specifická hmotnost [kg/m]				533,600
Obecná hmotnost [kg]				0,395
Obecná hmotnost [kg]				210,772
				568,370
				779,992



C.p.	ϕ	Data	Pch	Data (m)	
				R8	R12
		(mm)	4		
12	R12	50.00		120.000	
13	R8	0.99	86	66.940	
Observed data	(m)			66.940	120.000
Specified limitpoint	kg/m			0.395	0.888
Observed limitpoint	kg			34.343	106.560
Observed limitpoint	kg			166.903	



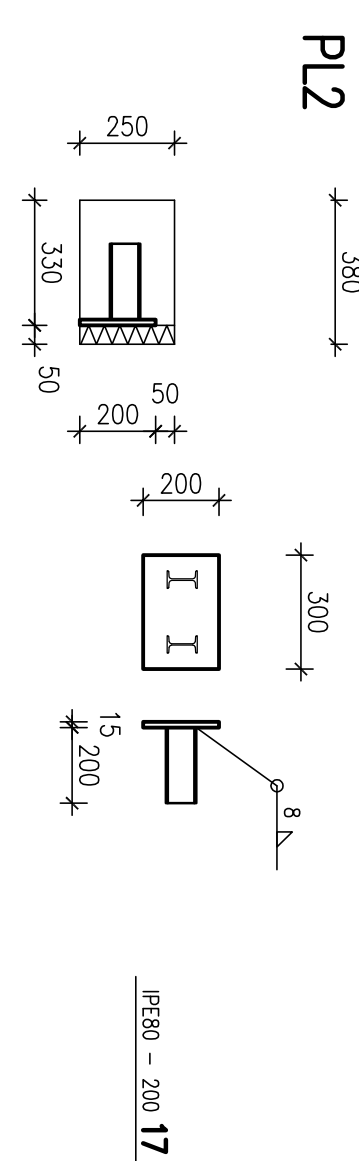
VÝKAZ VÝSTUŽE				
Č.p.	š	Delna	Počet	Obec (m)
				10551
14	R12	47,00	4	R12
15	R8	0,84	136	R8
Čeková dílna (m)				113,970
Čeková hraničár (m)				188,000
Čeková hraničár (kg)				0,395
Čeková hraničár (kg)				45,071
Čeková hraničár (kg)				185,544
				211,961



Wzrost	ciężar ciała	ciężar ciała na m ²	ciężar ciała	ciężar ciała
14	2	HEB 180 – 6500 5205	1 kg 13000	665,60 898,56

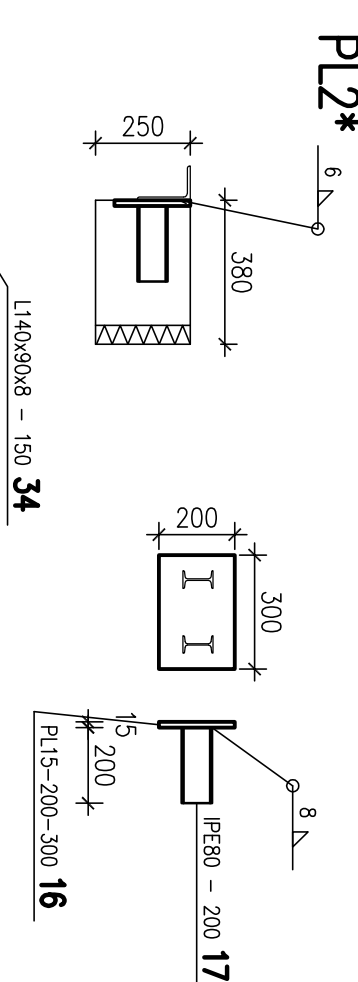
ρ_{obj}	ks	Převr ... Doba Material pro 1 ks	Hmotnost na 1m ³ [mm]	Celková délka [kg]
15	6	PE180 – 6300 S235	18.80 kg/m ³ 12.20 kg/ks	733.20 989.82
Hmotnost celky včetně přísl.				989.82

	Přehled
mnohostranné složené členění – celá množina konkrétních složek různých funkcí	
kódování do PLZ	
tříby přepoj.	Kčtin 2680/240
tříby přepoj.	druhu C 74
tříby přepoj.	vše S 235
	Kčtin 2680/240
	1200 kg



C ₆₀	Ks	Přidáv. materiál	Doba prohřívání pro 1 kg	Očekávaný výkon [mm]	Očekávané teplo [kJ]
16	4	FUS-260-300 S235	7,0 kg/s		28,26
17	8	PE60...200 S235	6,0 kg/s 1,20 kg/s	1600	9,60
Průměrné oční výkon [kg]					37,86
Teplotní přírůstek [°C]					5,11

Genotype	Plant height (cm)	Stem diameter (mm)	Stem weight (g)	Stem length (cm)	Stem volume (cm ³)	Stem density (g/cm ³)
1	18	10.08	27.0	49.0	864	23.6
2	19	10.08	27.0	49.0	864	23.6
3	18	10.08	27.0	49.0	864	23.6
4	19	10.08	27.0	49.0	864	23.6
5	18	10.08	27.0	49.0	864	23.6
6	20	10.08	27.0	49.0	864	23.6
7	21	10.08	27.0	49.0	864	23.6
8	22	10.08	27.0	49.0	864	23.6
9	23	10.08	27.0	49.0	864	23.6
10	24	10.08	27.0	49.0	864	23.6
11	25	10.08	27.0	49.0	864	23.6
12	26	10.08	27.0	49.0	864	23.6
13	27	10.08	27.0	49.0	864	23.6
14	28	10.08	27.0	49.0	864	23.6
15	29	10.08	27.0	49.0	864	23.6
16	30	10.08	27.0	49.0	864	23.6
17	31	10.08	27.0	49.0	864	23.6
18	32	10.08	27.0	49.0	864	23.6
19	33	10.08	27.0	49.0	864	23.6
20	34	10.08	27.0	49.0	864	23.6
21	35	10.08	27.0	49.0	864	23.6
22	36	10.08	27.0	49.0	864	23.6
23	37	10.08	27.0	49.0	864	23.6
24	38	10.08	27.0	49.0	864	23.6
25	39	10.08	27.0	49.0	864	23.6
26	40	10.08	27.0	49.0	864	23.6
27	41	10.08	27.0	49.0	864	23.6
28	42	10.08	27.0	49.0	864	23.6
29	43	10.08	27.0	49.0	864	23.6
30	44	10.08	27.0	49.0	864	23.6
31	45	10.08	27.0	49.0	864	23.6
32	46	10.08	27.0	49.0	864	23.6
33	47	10.08	27.0	49.0	864	23.6
34	48	10.08	27.0	49.0	864	23.6
35	49	10.08	27.0	49.0	864	23.6
36	50	10.08	27.0	49.0	864	23.6
37	51	10.08	27.0	49.0	864	23.6
38	52	10.08	27.0	49.0	864	23.6
39	53	10.08	27.0	49.0	864	23.6
40	54	10.08	27.0	49.0	864	23.6
41	55	10.08	27.0	49.0	864	23.6
42	56	10.08	27.0	49.0	864	23.6
43	57	10.08	27.0	49.0	864	23.6
44	58	10.08	27.0	49.0	864	23.6
45	59	10.08	27.0	49.0	864	23.6
46	60	10.08	27.0	49.0	864	23.6
47	61	10.08	27.0	49.0	864	23.6
48	62	10.08	27.0	49.0	864	23.6
49	63	10.08	27.0	49.0	864	23.6
50	64	10.08	27.0	49.0	864	23.6
51	65	10.08	27.0	49.0	864	23.6
52	66	10.08	27.0	49.0	864	23.6
53	67	10.08	27.0	49.0	864	23.6
54	68	10.08	27.0	49.0	864	23.6
55	69	10.08	27.0	49.0	864	23.6
56	70	10.08	27.0	49.0	864	23.6
57	71	10.08	27.0	49.0	864	23.6
58	72	10.08	27.0	49.0	864	23.6
59	73	10.08	27.0	49.0	864	23.6
60	74	10.08	27.0	49.0	864	23.6
61	75	10.08	27.0	49.0	864	23.6
62	76	10.08	27.0	49.0	864	23.6
63	77	10.08	27.0	49.0	864	23.6
64	78	10.08	27.0	49.0	864	23.6
65	79	10.08	27.0	49.0	864	23.6
66	80	10.08	27.0	49.0	864	23.6
67	81	10.08	27.0	49.0	864	23.6
68	82	10.08	27.0	49.0	864	23.6
69	83	10.08	27.0	49.0	864	23.6
70	84	10.08	27.0	49.0	864	23.6
71	85	10.08	27.0	49.0	864	23.6
72	86	10.08	27.0	49.0	864	23.6
73	87	10.08	27.0	49.0	864	23.6
74	88	10.08	27.0	49.0	864	23.6
75	89	10.08	27.0	49.0	864	23.6
76	90	10.08	27.0	49.0	864	23.6
77	91	10.08	27.0	49.0	864	23.6
78	92	10.08	27.0	49.0	864	23.6
79	93	10.08	27.0	49.0	864	23.6
80	94	10.08	27.0	49.0	864	23.6
81	95	10.08	27.0	49.0	864	23.6
82	96	10.08	27.0	49.0	864	23.6
83	97	10.08	27.0	49.0	864	23.6
84	98	10.08	27.0	49.0	864	23.6
85	99	10.08	27.0	49.0	864	23.6
86	100	10.08	27.0	49.0	864	23.6
87	101	10.08	27.0	49.0	864	23.6
88	102	10.08	27.0	49.0	864	23.6
89	103	10.08	27.0	49.0	864	23.6
90	104	10.08	27.0	49.0	864	23.6
91	105	10.08	27.0	49.0	864	23.6
92	106	10.08	27.0	49.0	864	23.6
93	107	10.08	27.0	49.0	864	23.6
94	108	10.08	27.0	49.0	864	23.6
95	109	10.08	27.0	49.0	864	23.6
96	110	10.08	27.0	49.0	864	23.6
97	111	10.08	27.0	49.0	864	23.6
98	112	10.08	27.0	49.0	864	23.6
99	113	10.08	27.0	49.0	864	23.6
100	114	10.08	27.0	49.0	864	23.6
101	115	10.08	27.0	49.0	864	23.6
102	116	10.08	27.0	49.0	864	23.6
103	117	10.08	27.0	49.0	864	23.6
104	118	10.08	27.0	49.0	864	23.6
105	119	10.08	27.0	49.0	864	23.6
106	120	10.08	27.0	49.0	864	23.6
107	121	10.08	27.0	49.0	864	23.6
108	122	10.08	27.0	49.0	864	23.6
109	123	10.08	27.0	49.0	864	23.6
110	124	10.08	27.0	49.0	864	23.6
111	125	10.08	27.0	49.0	864	23.6
112	126	10.08	27.0	49.0	864	23.6
113	127	10.08	27.0	49.0	864	23.6
114	128	10.08	27.0	49.0	864	23.6
115	129	10.08	27.0	49.0	864	23.6
116	130	10.08	27.0	49.0	864	23.6
117	131	10.08	27.0	49.0	864	23.6
118	132	10.08	27.0	49.0	864	23.6
119	133	10.08	27.0	49.0	864	23.6
120	134	10.08	27.0	49.0	864	23.6
121	135	10.08	27.0	49.0	864	23.6
122	136	10.08	27.0	49.0	864	23.6
123	137	10.08	27.0	49.0	864	23.6
124	138	10.08	27.0	49.0	864	23.6
125	139	10.08	27.0	49.0	864	23.6
126	140	10.08	27.0	49.0	864	23.6
127	141	10.08	27.0	49.0	864	23.6
128	142	10.08	27.0	49.0	864	23.6
129	143	10.08	27.0	49.0	864	23.6
130	144	10.08	27.0	49.0	864	23.6
131	145	10.08	27.0	49.0	864	23.6
132	146	10.08	27.0	49.0	864	23.6
133	147	10.08	27.0	49.0	864	23.6
134	148	10.08	27.0	49.0	864	23.6
135	149	10.08	27.0	49.0	864	23.6
136	150	10.08	27.0	49.0	864	23.6
137	151	10.08	27.0	49.0	864	23.6
138	152	10.08	27.0	49.0	864	23.6
139	153	10.08	27.0	49.0	864	23.6
140	154	10.08	27.0	49.0	864	23.6
141	155	10.08	27.0	49.0	864	23.6
142	156	10.08	27.0	49.0	864	23.6
143	157	10.08	27.0	49.0	864	23.6
144	158	10.08	27.0	49.0	864	23.6
145	159	10.08	27.0	49.0	864	23.6
146	160	10.08	27.0	49.0	864	23.6
147	161	10.08	27.0	49.0	864	23.6
148	162	10.08	27.0	49.0	864	23.6
149	163	10.08	27.0	49.0	864	23.6
150	164	10.08	27.0	49.0	864	23.6
151	165	10.08	27.0	49.0	864	23.6
152	166	10.08	27.0	49.0	864	23.6
153	167	10.08	27.0	49.0	864	23.6
154	168	10.08	27.0	49.0	864	23.6
155	169	10.08	27.0	49.0	864	23.6
156	170	10.08	27.0	49.0	864	23.6
157	171	10.08	27.0	49.0	864	23.6
158	172	10.08	27.0	49.0	864	23.6
159	173	10.08	27.0	49.0	864	23.6
160	174	10.08	27.0	49.0	864	23.6
161	175	10.08	27.0	49.0	864	23.6
162	176	10.08	27.0	49.0	864	23.6
163	177	10.08	27.0	49.0	864	23.6
164	178	10.08	27.0	49.0	864	23.6
165	179	10.08	27.0	49.0	864	23.6
166	180	10.08	27.0	49.0	864	23.6
167	181	10.08	27.0	49.0	864	23.6
168	182	10.08	27.0	49.0	864	23.6
169	183	10.08	27.0	49.0	864	23.6
170	184	10.08	27.0	49.0	864	23.6
171	185	10.08	27.0	49.0	864	23.6
172	186	10.08	27.0	49.0	864	23.6
173	187	10.08	27.0	49.0	864	23.6
174	188	10.08	27.0	49.0	864	23.6
175	189	10.08	27.0	49.0	864	23.6
176	190	10.08	27.0	49.0	864	23.6
177	191	10.08	27.0	49.0	864	23.6
178	192	10.08	27.0	49.0	864	23.6
179	193	10.08	27.0	49.0	864	23.6
180	194	10.08	27.0	49.0	864	23.6
181	195	10.08	27.0	49.0	864	23.6
182	196	10.08	27.0	49.0	864	23.6
183	197	10.08	27.0	49.0	864	23.6
184	198	10.08	27.0	49.0	864	23.6
185	199	10.08	27.0	49.0	864	23.6
186	200	10.08	27.0	49.0	864	23.6
187	201	10.08	27.0	49.0	864	23.6
188	202	10.08	27.0	49.0	864	23.6
189	203	10.08	27.0	49.0	864	23.6
190	204	10.08	27.0	49.0	864	23.6
191	205	10.08	27.0	49.0	864	23.6
192	206	10.08	27.0	49.0	864	23.6
193						



Chemical analysis	kg	Proper ... like	Heat-treated in m	Caloric value	Relative moisture
			kg ... kg	(mm)	
1	6	P-15-300-300	7.07 kg/km	2400	42.39
17	12	5235	6.04 kg/km	2400	42.39
16	12	5235	12.0 kg/km	900	12.64
34	6	11600-150	21.1 kg/km	900	9.72
Heat-treated in steam (kg)		5235	21.1 kg/km		9.72

výšes nerohodzo výrobnú dokumentáciu OK

SIUPEN	:PD PRE REALIZACIU SLAVBY	±0.000 = 827,54
--------	---------------------------	-----------------

[illegible]